



# INDOFINE Chemical Company, Inc.

121 Stryker Lane, Bldg. 30, Suite 1 • Hillsborough, NJ 08844 • U.S.A.

Phone: (908) 359-6778 • FAX: (908) 359-1179

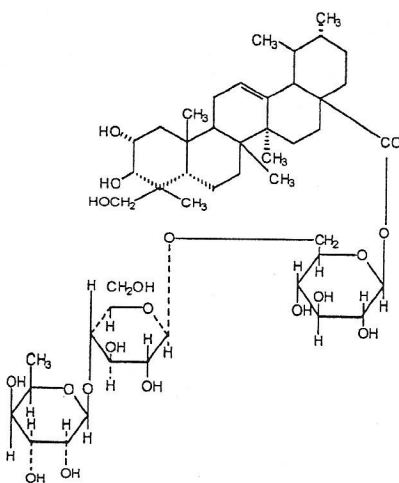
website: [www.indofinechemical.com](http://www.indofinechemical.com)

e-mail: [chemical@indofinechemical.com](mailto:chemical@indofinechemical.com)

## CERTIFICATE OF ANALYSIS

Cat No.: 06-011

<u>Product:</u>	ASIATICOSIDE
<u>CAS No.:</u>	[16830-15-2]
<u>Lot Number:</u>	0406207
<u>Molecular Formula:</u>	C <sub>40</sub> H <sub>78</sub> O <sub>19</sub>
<u>Molecular Weight:</u>	959.14
<u>Melting Point:</u>	230.1-233.8°C
<u>Appearance:</u>	White fluffy powder
<u>Solubility:</u>	Soluble in DMF
<u>Purity:</u>	96.8%





# INDOFINE Chemical Company, Inc.

121 Stryker Lane, Bldg. 30, Suite 1 • Hillsborough, NJ 08844 • U.S.A.

Phone: (908) 359-6778 • FAX: (908) 359-1179

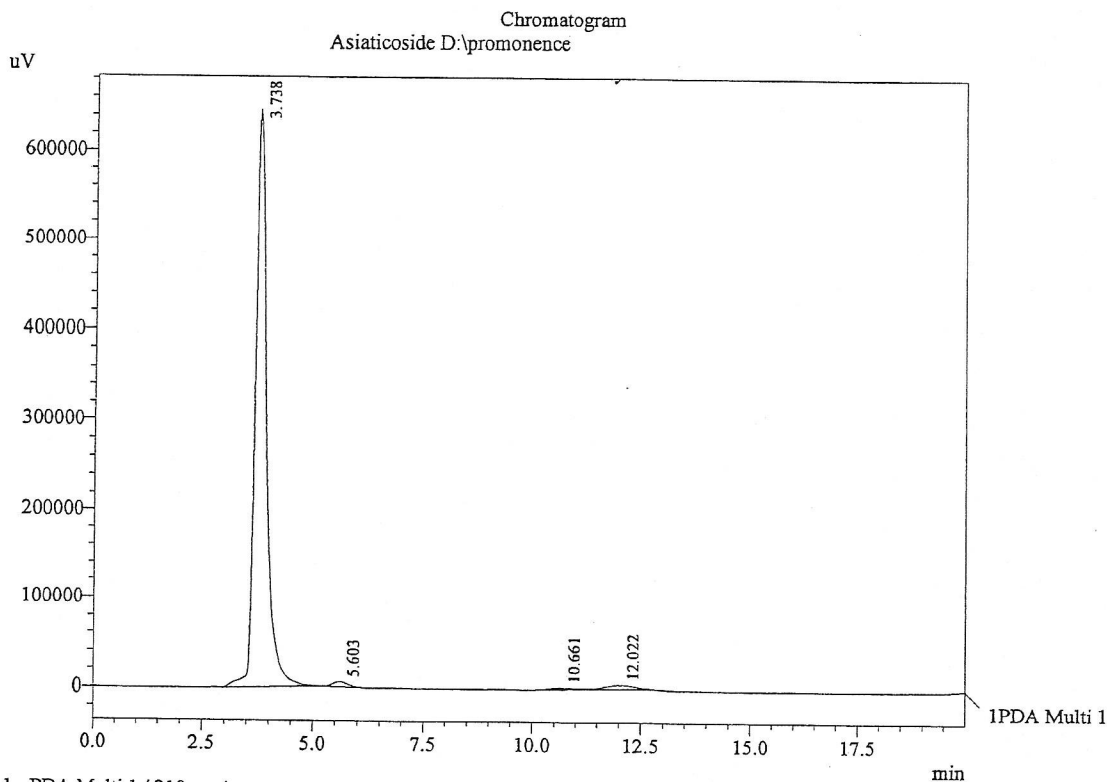
website: [www.indofinechemical.com](http://www.indofinechemical.com)

e-mail: [chemical@indofinechemical.com](mailto:chemical@indofinechemical.com)

Acquired by : Ramana  
Sample Name : Asiaticoside  
Sample ID : Indofine (Lot No.0406027)  
Injection Volume : 20 uL  
Data Filename : 280309B.lcd  
Method Filename : Linear Isocratic.M.lcm

Cat. No.: 06-011  
Name: Asiaticoside  
Lot No.: 0406207

Description:  
Column : Inertsil C-18, 250X4.6mm 5.0µm  
Flow : 0.600mL/min.  
Mobile Phase : A(50% Water 0.05% TFA) : B(50% ACN)



PeakTable

Ch1 210nm 4nm

Peak#	Ret. Time	Area	Height	Area %
1	3.738	11608401	646007	96.887
2	5.603	120609	5196	1.007
3	10.661	67516	1787	0.564
4	12.022	184908	4145	1.543
Total		11981433	657136	100.000